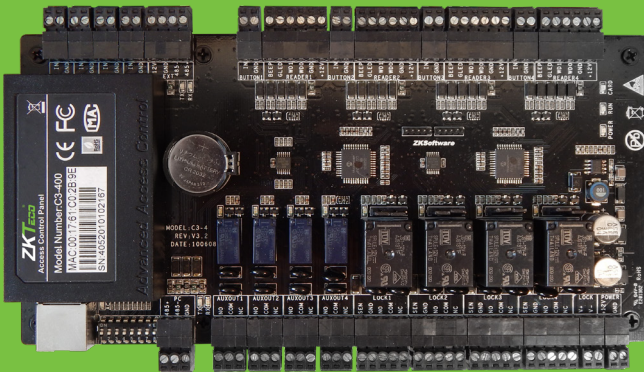
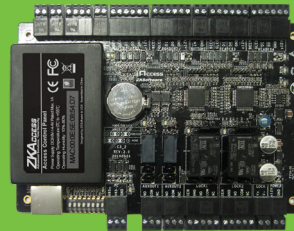


**SMB SERIES**

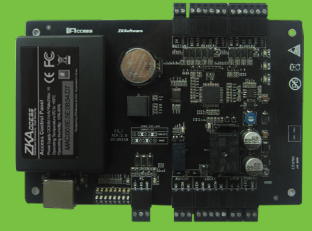
**C3-Series**  
IP-Based Access Control Panel



C3-400



C3-200



C3-100

State of the art 1, 2 and 4 door panels...  
web-based management software



**Choice of Readers:**

Full range of card readers supported. ZKAccess KR-Series readers are stylish and waterproof. C3 supports any Wiegand-output reader including HID Prox and iClass.



**Communication:**

C3 controllers install easily on your network and support both TCP/IP and RS-485 communication. Auto-discovery tool allows setting and modification of network parameters directly and easily.



**Lowest Total Cost of Ownership:**

C3 controller firmware can be upgraded in the field. New controller features can be loaded without any advanced tools, extending and expanding the value of your investment.



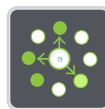
**Capacity:**

100,000 events and transactions. Controller is backed up in real-time in on-board optional SD card. Data is preserved if power is lost. Controller continues to operate if network connection is interrupted.



**Door Control and More:**

Along with relay contacts for controlling door locks, easily programmable auxiliary relays can be used for additional control and interface to lights, alarms, annunciators, intrusion detection panels, or even extra locking devices or gate controllers.



**Options:**

C3 controllers come in three sizes to suit project needs and reduce the cost of unused capacity. 1-door, 2-door, and 4-door models can be mixed and matched in an optimized system architecture.



**Advanced Access Control Built-In:**

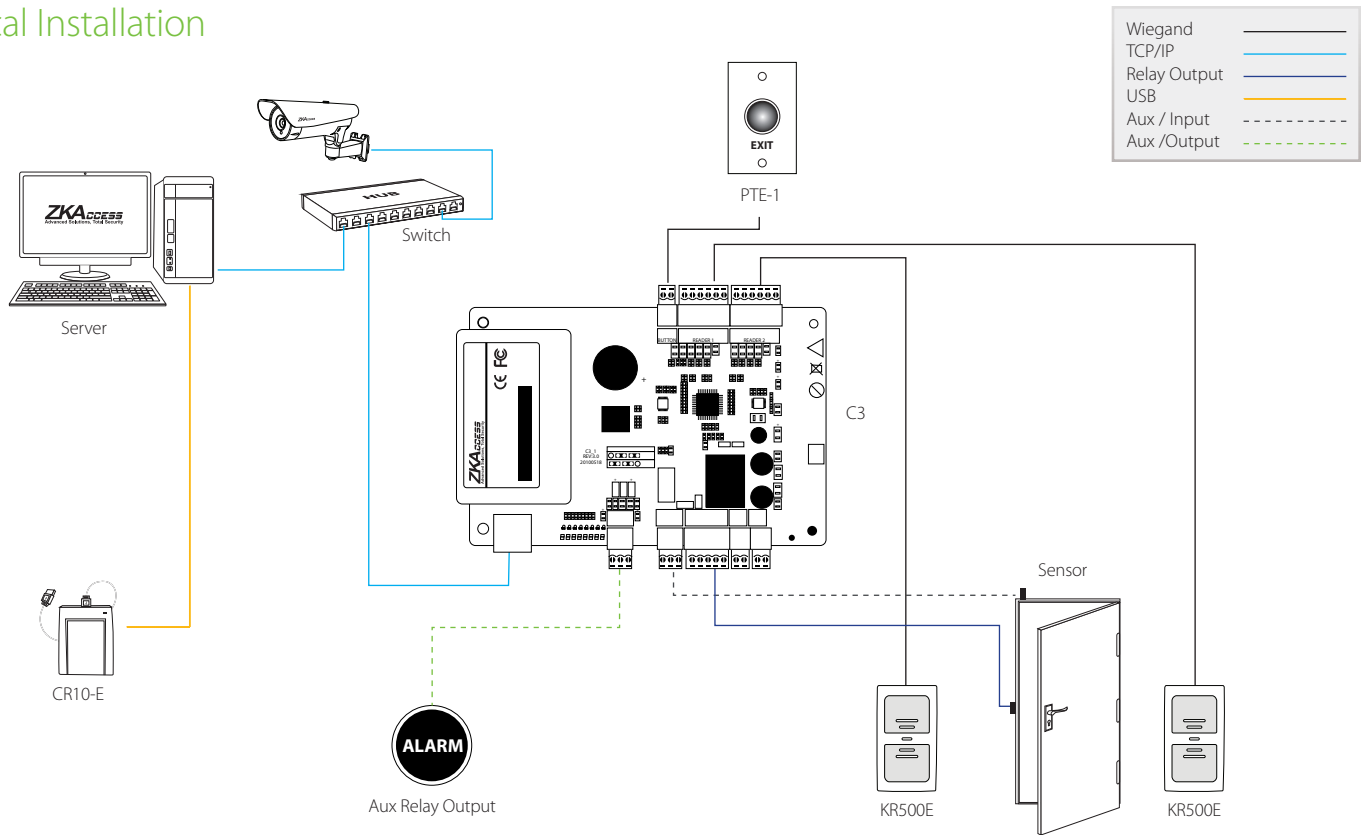
Anti-Passback, First-Card Opening, Multi-Card Opening, Duress Password Entry, and Auxiliary Input/Output Linkages are built into controller firmware.



**For Software Developers:**

Free SDK is available for integrators and OEM's to integrate the C3 controllers with their or existing security or personnel management applications. Upon request, ZK can also customize C3 firmware to meet any custom requirements.

# Typical Installation



## Specifications

### Capacity

Users: 30,000  
Event Buffer: 100,000 transactions

### Input Relays

3Form-C Relays- SPDT 5A@12VDC

### Communication

RS485, Ethernet

### Baud Rate for RS485

9600-38400 baud

### LED Indicator

Indication for communication, power, status and prox card

### Power

Consumption: 9W@12VDC, 750MA  
Power Supply: 12V DC, 12V DC, 3A

### Environment

Operating Temp: 32-113 °F (0-45 °C)  
Operating Humidity: 20% to 80%

## Optional Accessories



KR500E



KR501E



KR702E



KR503E



CR10-E



PTE-1



Prox Card



Prox-Keyfob

## ZKTeco USA

6 Kingsbridge Road, Unit 8, Fairfield, NJ 07004  
Phone: (862) 505-2101 • Fax: (862) 204-5906 • sales@zktcouusa.com • www.zktcouusa.com

© Copyright 2014. ZKTeco Inc. ZKTeco Logo and ZKAccess Logo are registered trademarks of ZKTeco or a related company. All other product and company names mentioned are used for identification purposes only and may be the trademarks of their respective owners. All specifications are subject to change without notice. All rights reserved.





## C3-Series Bundle

- 1 C3-Control Panel
- 1 Metal Case
- 1 DC12V/3A Power Supply
- 1 FR107 Diode for Lock
- 2 Keys for Metal Case
- 1 User Manual

	C3-100	C3-200	C3-400
Number of doors controlled	One door	Two Door	Four Door
Number of readers supported	2	4	4
Types of readers supported	26-bit Wiegand, others upon request	26-bit Wiegand, others upon request	26-bit Wiegand, others upon request
Number of Inputs	2 (Exit Device and Door Status)	6 (2 Exit Device, 2 Door Status, 2 AUX)	12 (4 Exit Device, 4 Door Status, 4 AUX)
Number of Outputs	2 (One Form C relay for lock and one Form C relay for Aux output)	4 (2- Form C relay for lock and 2- Form C relay for Aux output)	8 (4- Form C relay for lock and 4- Form C relay for Aux output)
Card Holders Capacity	30,000	30,000	30,000
Log Events Capacity	100,000	100,000	100,000
Weight	9 lbs (4 kg)	10 lbs (4.5 kg)	10 lbs (4.5 kg)
Communication	TCP/IP and RS-485	TCP/IP and RS-485	TCP/IP and RS-485
Enclosure	Powder Coated Aluminium	Powder Coated Aluminium	Powder Coated Aluminium
Mounting	Wall Mount	Wall Mount	Wall Mount
Recommended Power Supply	12V DC, 1.5A	12V DC, 1.5A	12V DC, 1.5A
Dimensions (Bundle Only)	15in. X 3.15in. X 11in. 380mm(L) X 80mm(W) X 280mm(H)	15in. X 3.15in. X 11in. 380mm(L) X 80mm(W) X 280mm(H)	15in. X 3.15in. X 11in. 380mm(L) X 80mm(W) X 280mm(H)
Dimensions ( Board Only)	6.3in. X 4.17in. (160mm X 106mm)	6.3in. X 4.17in. (160mm X 106mm)	8.5in X 5in. (216mm X 127mm)

### ZKTeco USA

6 Kingsbridge Road, Unit 8, Fairfield, NJ 07004  
 Phone: (862) 505-2101 • Fax: (862) 204-5906 • sales@zktecousa.com • www.zktecousa.com

© Copyright 2014. ZKTeco Inc. ZKTeco Logo and ZKAccess Logo are registered trademarks of ZKTeco or a related company.  
 All other product and company names mentioned are used for identification purposes only and may be the trademarks of their respective owners.  
 All specifications are subject to change without notice. All rights reserved.

