



## FV350-ID

### Multi-biometric Finger Vein and Fingerprint recognition technology based Standalone Access Control Reader

FV350-ID is a multi-biometric reader capable of capturing and processing finger vein and fingerprint biometric data at the same time. Ergonomic, intuitive and highly secured, FV350-ID leads us to a new era of enhancing security with biometrics. Its infra red rays illuminates the vein pattern which is then converted into a biometric template. Both the vein and fingerprint templates are then stored in the database for subsequent matching.



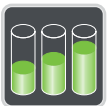
#### Multi-biometric technology:

Identify or verify users by their finger-vein, fingerprint, proximity card or PIN/password... or any combination, all conveniently from a single device.



#### Communication:

FV350-ID installs easily on your network having both TCP/IP and RS232/485 serial ports. Its USB port allows for offline data backup and management when the network is unavailable.



#### Capacity:

Supports one to many (1: N) matching for up to 1,000 finger-vein templates and 1,000 fingerprint templates and 2,000 cards/badges.



#### Options:

FV350-ID can be configured with optional internal modules which read HID Prox, HID iclass or 13.56 MHz Mifare cards.



#### Display/Audio:

Stunning 2.8-inch color TFT touch screen provides ease of use and rich user experience with intuitive and user friendly GUI. Includes both voice and visual prompts which indicate the acceptance or rejection of fingerprint, finger-vein, prox card or PIN/Password.



#### Access control:

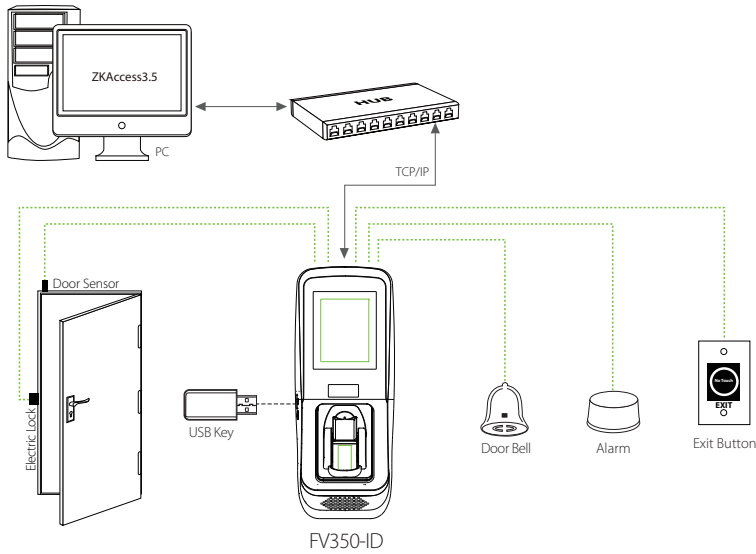
Contact Relays for door locks, exit button, alarms & bell. Supports 50 time zones, 99 groups and 10 unlock combinations. Wiegand IN and OUT ports can be used to connect FV350-ID to any ZK or 3rd party access control panels and peripherals.



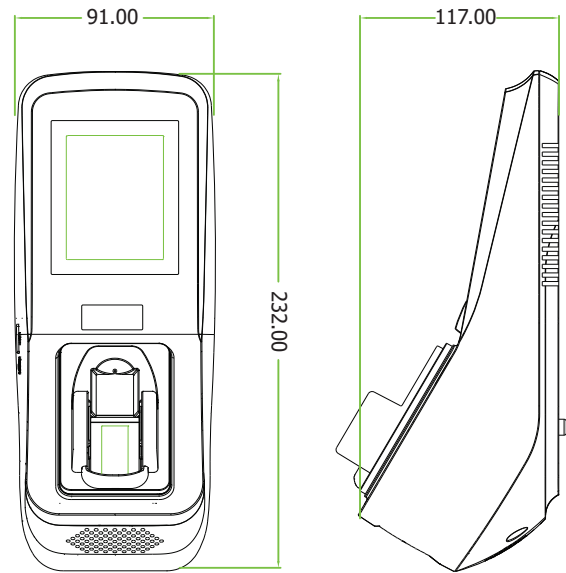
#### For Software Developers:

Free SDK and development tools are available for developers/partners who wish to integrate FV350-ID with any application which requires verifying people. Custom development is also available for OEM partners upon request.

## Standalone Installation



## Dimensions (mm)



## Specifications

### Capacity

Finger vein: 1,000 templates  
Fingerprint: 1,000 templates  
RFID Cards: 2,000 cards (optional)

### Communication

Ethernet: 10/100 Mbps TCP/IP,  
Weigand: Input and Output  
(Supports 26 bit to 66 bit format),  
(Also supports Special Relay box-SRB)  
USB: USB Host

### Dimensions

Length: 9.15 inches ( 23.2 cm)  
Width: 3.58 inches (9.1cm)  
Depth: 4.6 inches (11.7cm)

### Power:

Power Consumption: 9W @12 VDC, 750mA  
(12V DC , 3A power supply included in the box)

### Display

2.8 inch TFT Touch Display

### Environment

Operating Temperature:  
14°F - 113°F (-10°C - 45°C)  
Operating Humidity: 20%-80%

### Supported Card Formats

ID Card  
HID Card  
Mifare Card

## Part Numbers

FV350-ID:  
with RFID card reader

FV350-HID:  
with HID card reader

FV350-M:  
with Mifare card reader

## ZKAccess

6 Kingsbridge Road, Unit 8, Fairfield, NJ 07004  
Phone: (862) 505-2101 • Fax: (862) 204-5906 • sales@zkaccess.com • www.zkaccess.com

© Copyright 2016. ZKTeco Inc. ZKTeco Logo and ZKAccess Logo are registered trademarks of ZKTeco or a related company.  
All other product and company names mentioned are used for identification purposes only and may be the trademarks of their respective owners.  
All specifications are subject to change without notice. All rights reserved.

